

DOMESTIC VIOLENCE RELATED MURDER IN NSW

Trends to December 2025



Long-term trends in domestic violence related murder

32 victims

12 months to Dec 2025



14

Adult female victims



6

Child victims

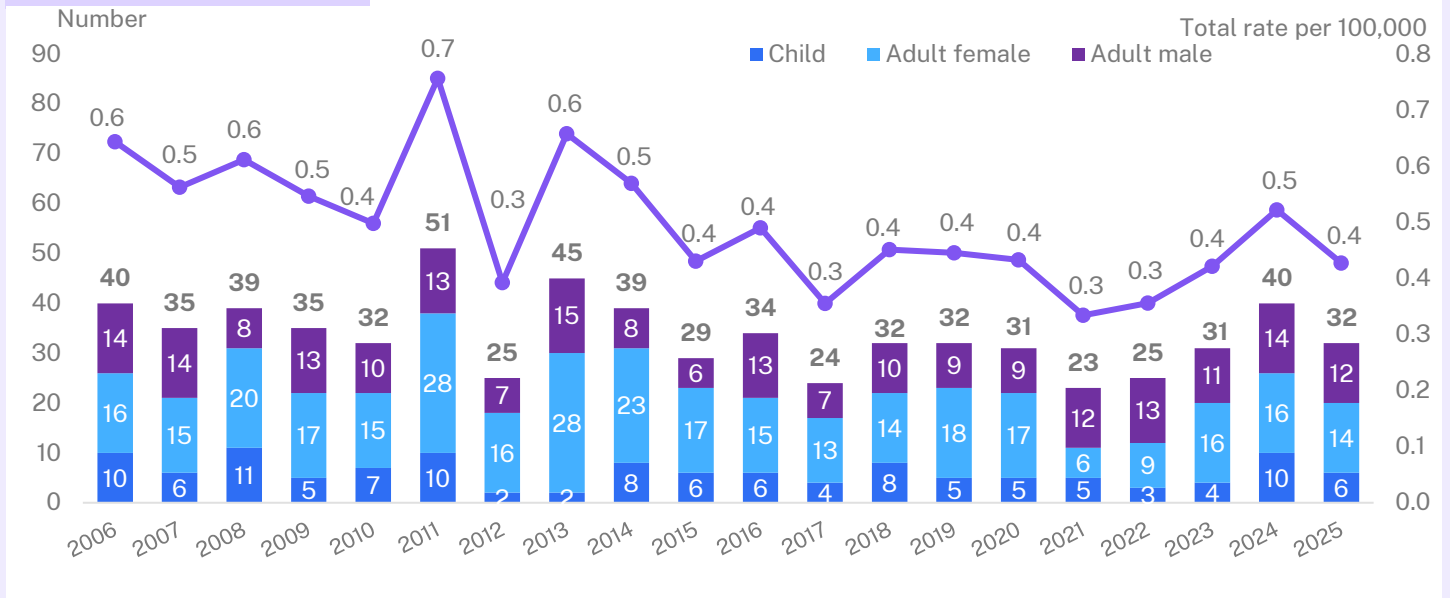


12

Adult male victims

Down

20-year trend

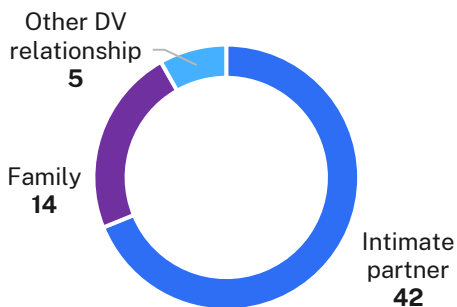


Relationship between victim of DV murder and perpetrator

Adult female victims

69% of adult female victims were murdered by an intimate partner

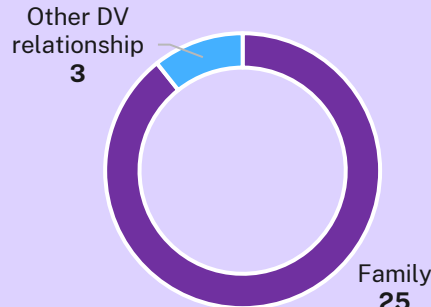
Relationship type adult female victims, 5 years to Dec 25 (n=61)



Child victims

89% of child victims were murdered by a family member

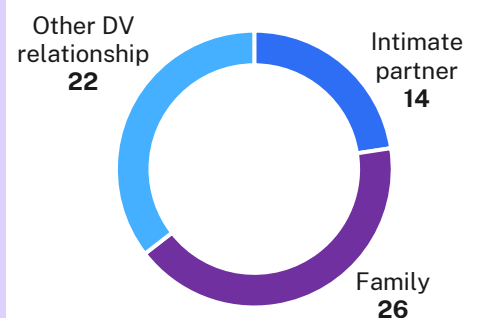
Relationship type child victims, 5 years to Dec 25 (n=28)



Adult male victims

35% of adult male victims were murdered by someone other than a partner or family member, e.g. a flatmate

Relationship type adult male victims, 5 years to Dec 25 (n=62)



DOMESTIC VIOLENCE RELATED MURDER IN NSW

Trends to December 2025



Long-term trends in intimate partner murder

10 victims

12 months to Dec 2025



9

Adult female victims

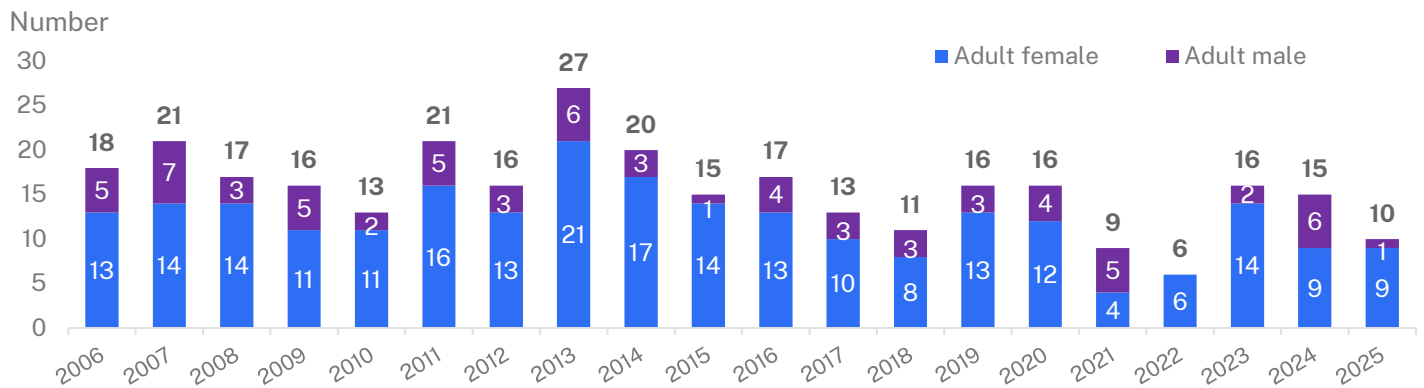


1

Adult male victims

Down

20-year trend

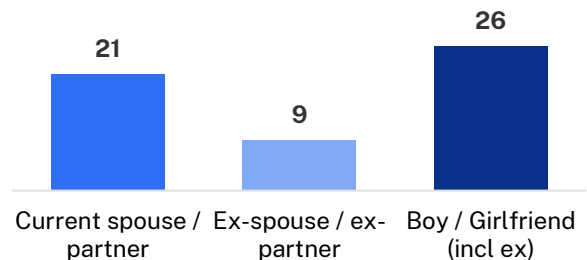


Nature of the intimate partner relationship

38% or 21 victims were murdered by a current spouse or partner
16 women and 6 men

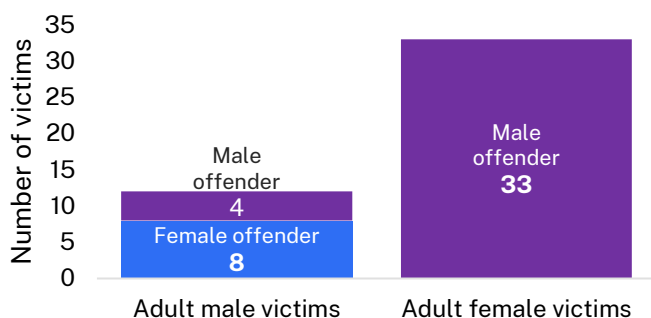
46% or 26 victims were murdered by a current or ex-boyfriend/girlfriend
20 women and 6 men

Relationship type, 5 years to Dec 25 (n=56)



Perpetrators of intimate partner murder

Gender of perpetrator, 5 years to Dec 25 (n=45)



100% of adult female victims were murdered by a male intimate partner

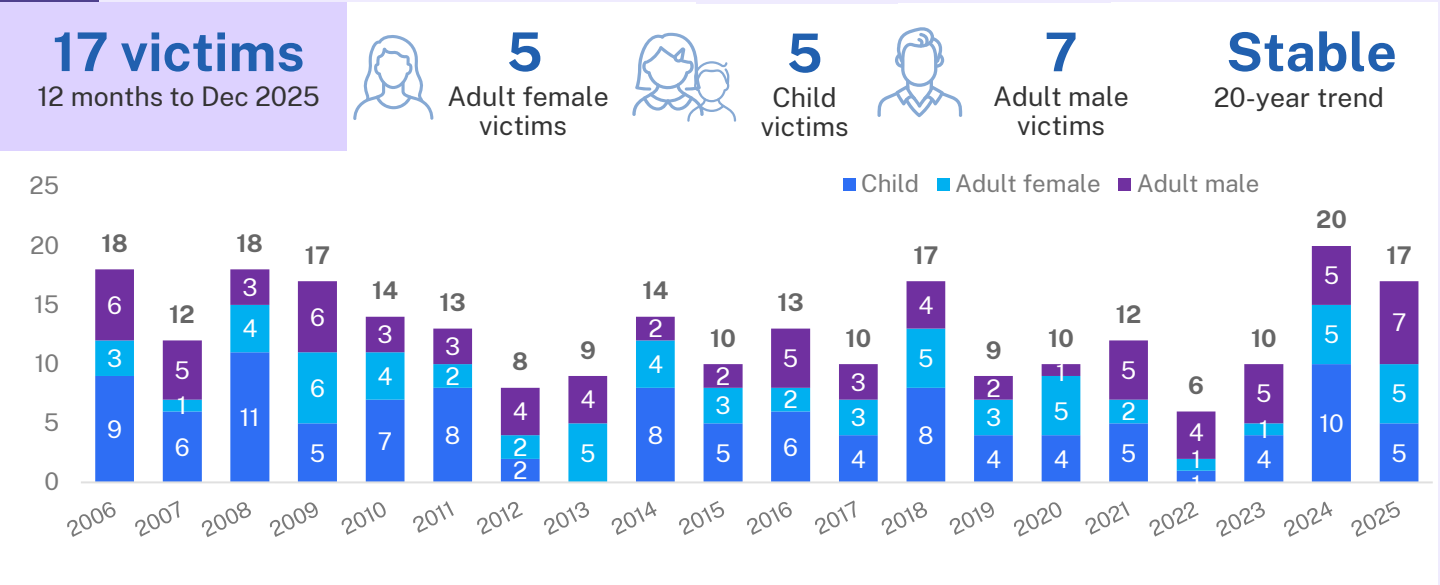


67% of adult male victims were murdered by a female intimate partner

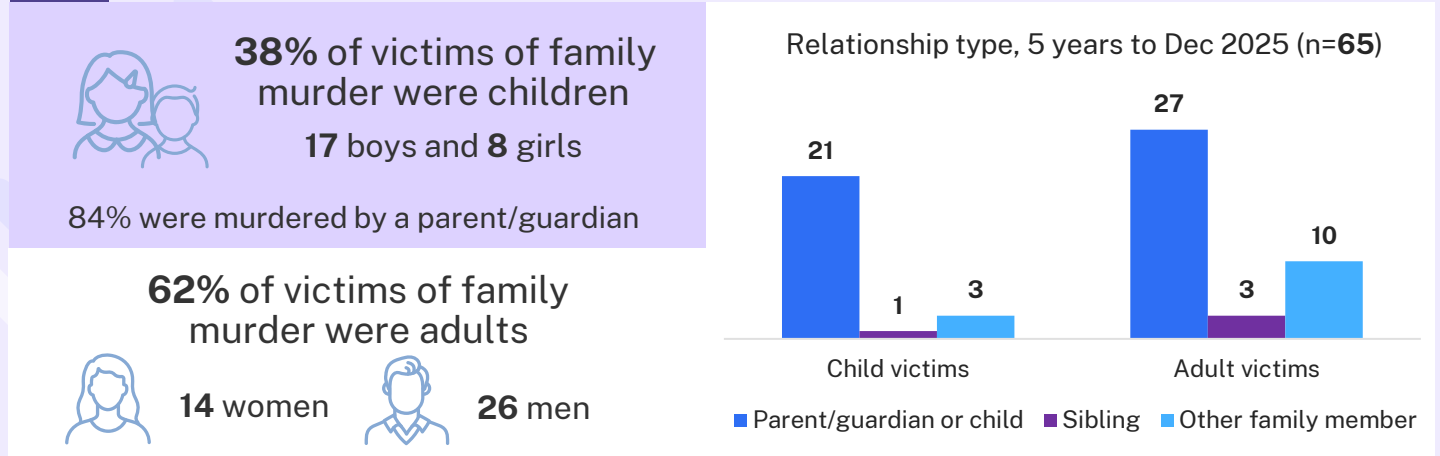
DOMESTIC VIOLENCE RELATED MURDER IN NSW

Trends to December 2025

Long-term trends in family murder



Nature of the family relationship



Perpetrators of family murder

