

*Data relates to 550 domestic violence homicides between 1 July 2000 to 30 June 2022. Percentages may vary in categories as one case may have victims in more than one category.



1 in 3

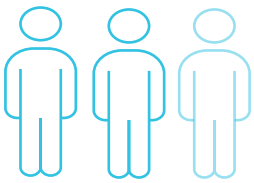
 homicides in NSW were in a **domestic violence*** context

56%

 Intimate partner violence homicides

80%
Females
killed

20%
Males
killed



2 in 3 women were killed by an ex-partner or at the point of separating from their partner

Domestic Violence Abuser



Men who killed their female intimate partner were almost always the domestic violence abuser in the relationship, while women who killed men were almost always the victim of their partner's violence

50% of the men's history of using domestic violence had **not** been reported to police



75% of men had used **3 or more** types of domestic violence against their female partner during the relationship

Almost 18%

 filicides (parent killing child/ren)

40% of children killed by a parent were 1 year old or less

60% perpetrated by a male parent



90% of the children had history of intimate partner violence between parents

17%

 relative/kin homicides

50% were parents killed by sons

2 in 3 relative/kin offenders had alcohol and other drug issues and **80%** had history of mental health issues.



10%

 'Other' domestic violence homicides

90% were related to intimate partner violence, and most often involved a woman's ex-partner killing her new intimate partner